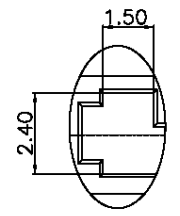
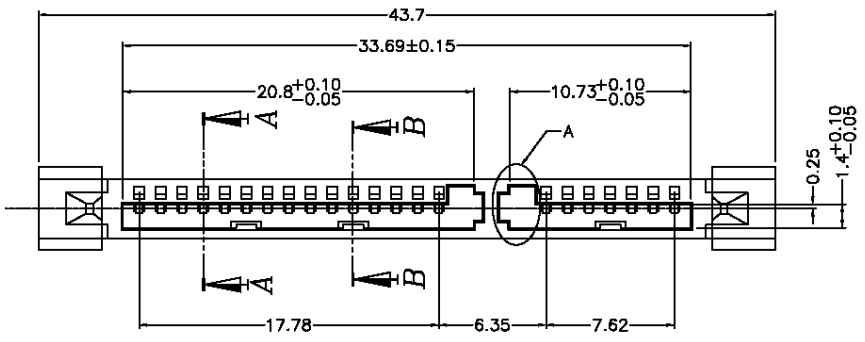


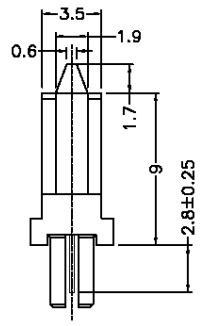
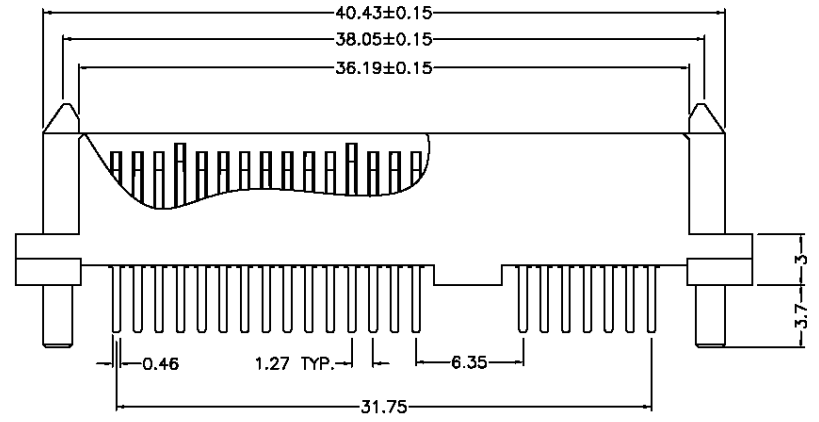
REV.	ECN NO.	APPD	DATE
AO	RELEASE	Colin Chen	03/27'07

**NOTES:**

- MATERIAL:**  
 INSULATOR: LCP GF, UL 94V-0, Black.  
 CONTACT: PHOSPHOR BRONZE.  
 PLATING: GOLD PLATING OVER NICKEL ON CONTACT AREA,  
 TIN PLATING OVER NICKEL ON SOLDER TAIL. (See P/N).  
 BOARDLOCK: COPPER ALLOY, TIN PLATED.
- ELECTRICAL**  
 VOLTAGE RATING: 100 VAC (R. M. S.) MAX.  
 CONTACT CURRENT RATING : 1.5 AMP .  
 INSULATION RESISTANCE : 1000 MΩ MIN.  
 DIELECTRIC WITHSTANDING VOLTAGE: 500 V AC (R. M. S.)  
 CONTACT RESISTANCE : 30 mΩ MAX.
- ENVIRONMENTAL**  
 TEMPERATURE RANGE: -55° C TO + 125° C.



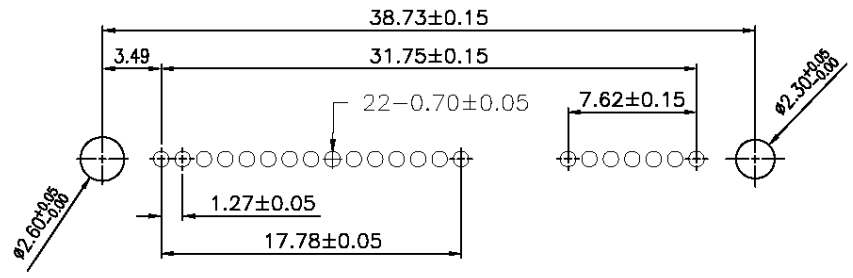
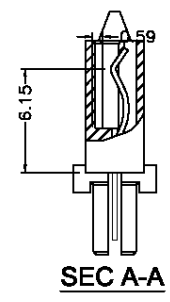
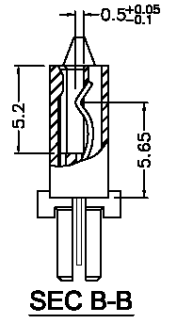
**DETAIL:A**  
**SCALE: 2:1**



**PART NO. :**  
**R-SAT-BF1B-007\*-100**

**PLATING CODE**

code	contact area	solder area	code	contact area	solder area
0	Gold 1u"	matte tin	A	Gold 1u"	light tin
2	Gold 5u"	matte tin	C	Gold 5u"	light tin
3	Gold 10u"	matte tin	D	Gold 10u"	light tin
4	Gold 15u"	matte tin	E	Gold 15u"	light tin
5	Gold 30u"	matte tin	F	Gold 30u"	light tin
			G	Gold 1u"	Gold 1u"
			H	Gold 3u"	Gold 3u"



**P. C. B. Layout**

.X ±0.38	UNITS	MM	NAME:	SATA 7+15P Female 180° Single Row
.XX ±0.25	MAT'L		PART NO.:	R-SAT-BF1B-007*-100
.XXX ±0.08	FINISH		APPD:	minniehse 08/09'07
.X* ±2*			CHKD:	jeff 08/09'07
			DR:	cheng 08/09'07

SHENZHEN SHENLONGFENG INDUSTRY CO., LTD		
SHENZHEN JUNHAO ENGINEERING CO., LTD		
TITLE: SATA 7+15P Female DIP Single Row (H=9.0)		
DWG NO.:		
<b>EP-C-SATA-BF1B-015</b>		
SCALE	SHEET	REV.
1:1	1/1	AO

THESE DRAWINGS AND SPECIFICATIONS ARE THE PROPERTY OF JUNHAO ENGINEERING CO., LTD. AND SHALL NOT BE REPRODUCED, COPIED OR USED IN ANY MANNER WITHOUT THE PRIOR WRITTEN CONSENT OF JUNHAO ENGINEERING CO., LTD.