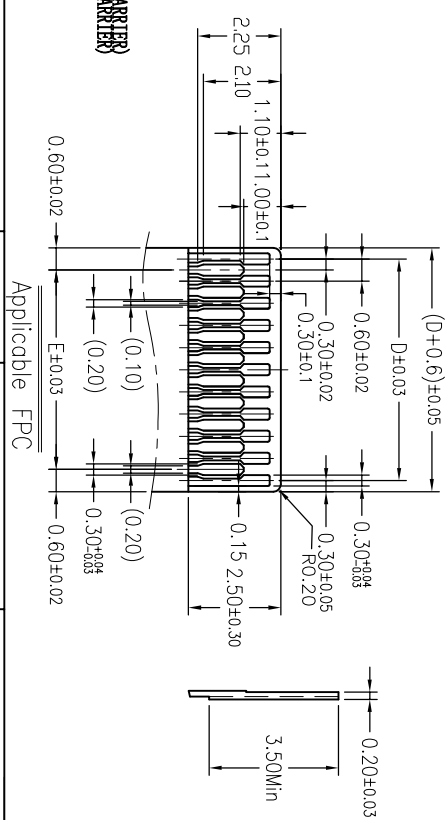
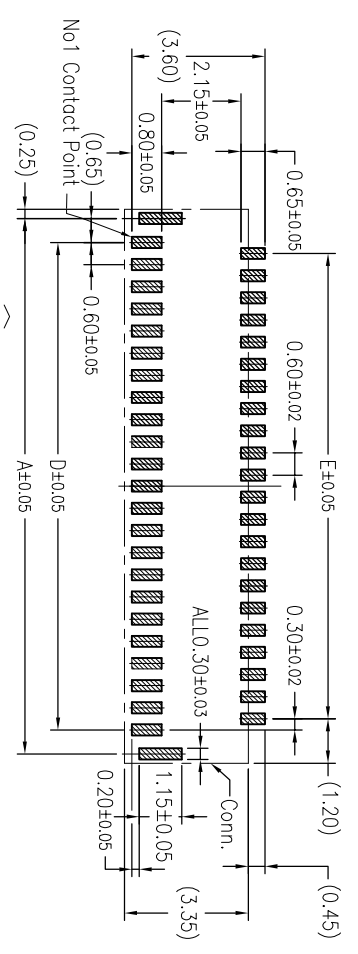
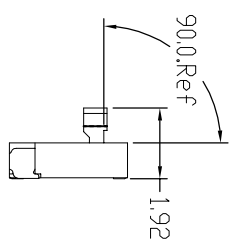
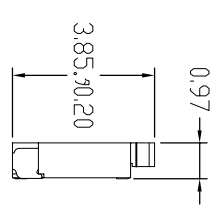
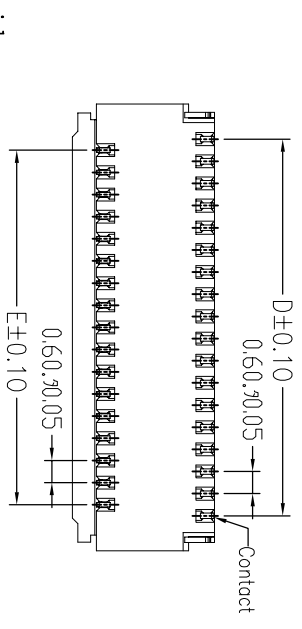
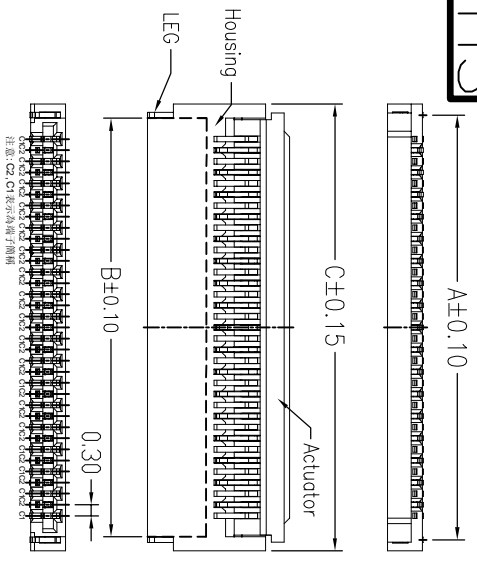


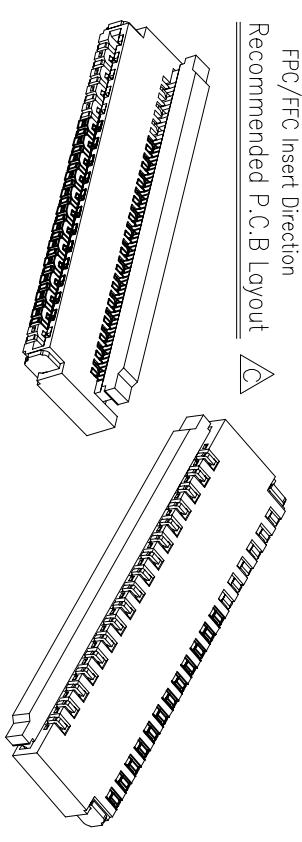
ROHS

1 2 3 4 5 6 7 8

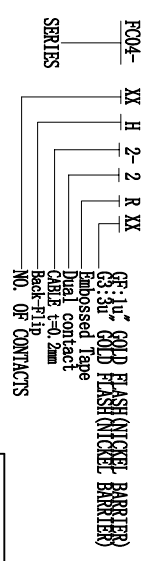
REV.	ECN NO.	DATE	SIGN	DESCRIPTION
A		7/11/13		RELEASED



9	3.70	3.10	4.30	2.40	1.80	41	13.30	12.70	13.90	12.00	11.40
11	4.30	3.70	4.90	3.00	2.40	43	13.90	13.30	14.50	12.60	12.00
13	4.90	4.30	5.50	3.60	3.00	45	14.50	13.90	15.10	13.20	12.60
15	5.50	4.90	6.10	4.20	3.60	47	15.10	14.50	15.70	13.80	13.20
17	6.10	5.50	6.70	4.80	4.20	49	15.70	15.10	16.30	14.40	13.80
19	6.70	6.10	7.30	5.40	4.80	51	16.30	15.70	16.90	15.00	14.40
21	7.30	6.70	7.90	6.00	5.40	53	16.90	16.30	17.50	15.60	15.00
23	7.90	7.30	8.50	6.60	6.00	55	17.50	16.90	18.10	16.20	15.60
25	8.50	7.90	9.10	7.20	6.60	57	18.10	17.50	18.70	16.80	16.20
27	9.10	8.50	9.70	7.80	7.20	59	18.70	18.10	19.30	17.40	16.80
29	9.70	9.10	10.30	8.40	7.80	61	19.30	18.70	19.90	18.00	17.40
31	10.30	9.70	10.90	9.00	8.40	63	19.90	19.30	20.50	18.60	18.00
33	10.90	10.30	11.50	9.60	9.00	65	20.50	19.90	21.10	19.20	18.60
35	11.50	10.90	12.10	10.20	9.60	67	21.10	20.50	21.70	19.80	19.20
37	12.10	11.50	12.70	10.80	10.20	69	21.70	21.10	22.30	20.40	19.80
39	12.70	12.10	13.30	11.40	10.80	71	22.30	21.70	22.90	21.00	20.40



- Note:
- Material
 - Housing: LCP UL94-V0 Color: Black
 - Actuator: LCP UL94-V0 Color: Black
 - Contact: Phosphor Bronze
 - LEG: brass
 - Plating
 - Contact: See Part Number
 - LEG: Matte Tin Plating Over Nickel
 - Rating:
 - Operating Voltage: 30V AC/DC
 - Current Rating: 0.2A AC/DC
 - Operating Temperature: -55°C +85°C
 - Part Number:



5. Standard "▽" size of key control size

TOLERANCE UNLESS SPECIFIED		DATE: 7/11/13	DAR. BY:	MATERIAL:
LINEAR	ANGLE	SCALE: 1:1	CHK. BY:	FINISH: ---
X ±0.35	X° XX	UNIT: mm	APP. BY:	PART NO: ---
XX ±0.15	X° ±2°			
.XXX ±0.10	.XX° XX			

深圳市君灏精密有限公司

TITLE: 0.3P1GH 0.94H FPC CONN

DWG NO. FC04-XXH2-2RXX

1 2 3 4 5 6 7 8