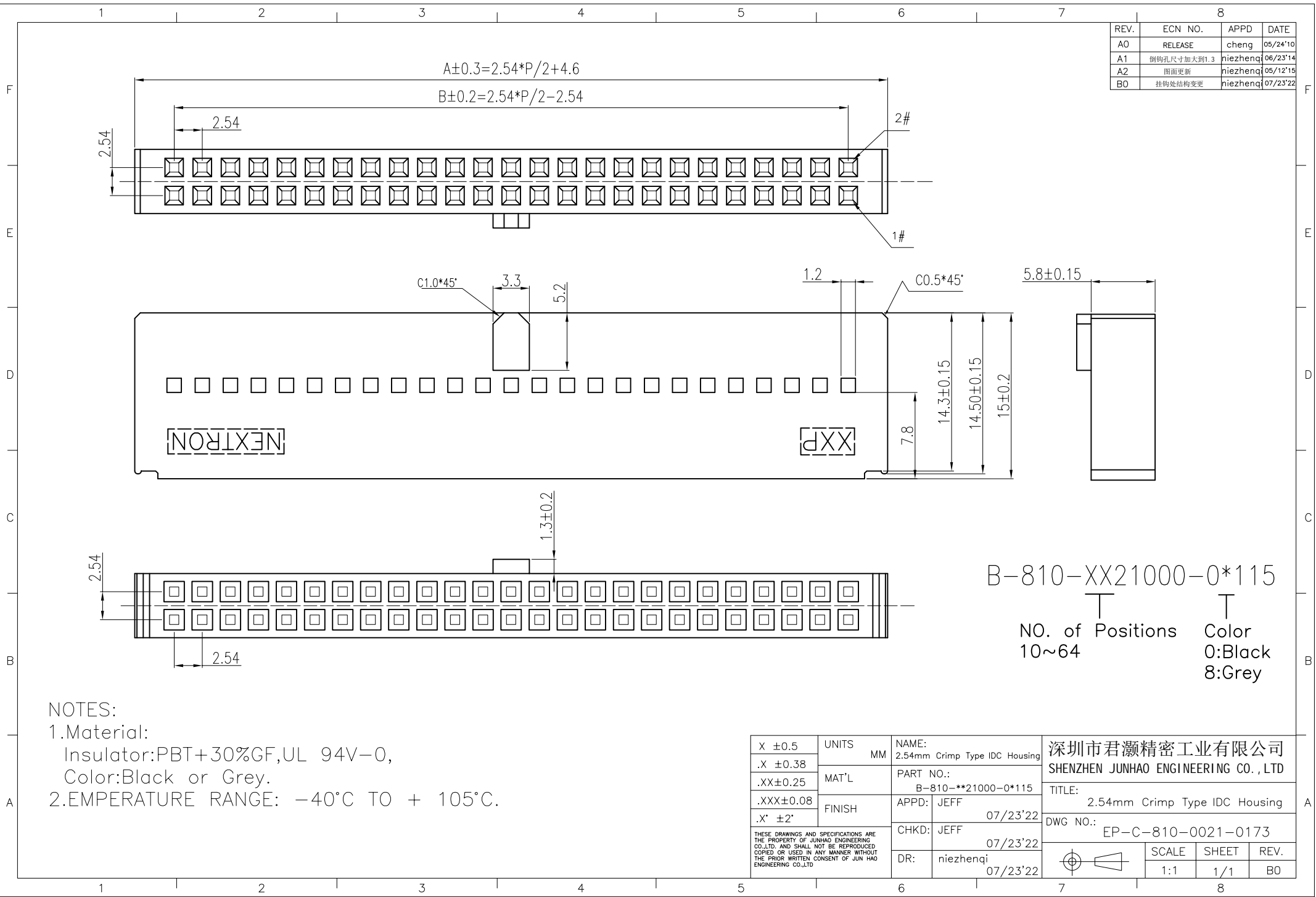


REV.	ECN NO.	APPD	DATE
A0	RELEASE	cheng	05/24'10
A1	倒钩孔尺寸加大到1.3	niezhenqi	06/23'14
A2	图面更新	niezhenqi	05/12'15
B0	挂钩处结构变更	niezhenqi	07/23'22



B-810-XX21000-0*115
 NO. of Positions 10~64
 Color 0:Black 8:Grey

NOTES:
 1.Material:
 Insulator:PBT+30%GF,UL 94V-0,
 Color:Black or Grey.
 2.EMPERATURE RANGE: -40°C TO + 105°C.

X ±0.5	UNITS MM	NAME: 2.54mm Crimp Type IDC Housing	深圳市君灏精密工业有限公司 SHENZHEN JUNHAO ENGINEERING CO.,LTD		
.X ±0.38		PART NO.: B-810-XX21000-0*115			
.XX±0.25	MAT'L	APPD: JEFF	TITLE: 2.54mm Crimp Type IDC Housing		
.XXX±0.08		07/23'22	DWG NO.: EP-C-810-0021-0173		
.X' ±2'	FINISH	CHKD: JEFF	SCALE SHEET REV.		
THESE DRAWINGS AND SPECIFICATIONS ARE THE PROPERTY OF JUNHAO ENGINEERING CO.,LTD. AND SHALL NOT BE REPRODUCED COPIED OR USED IN ANY MANNER WITHOUT THE PRIOR WRITTEN CONSENT OF JUN HAO ENGINEERING CO.,LTD		07/23'22	1:1	1/1	B0
		DR: niezhenqi			
		07/23'22			