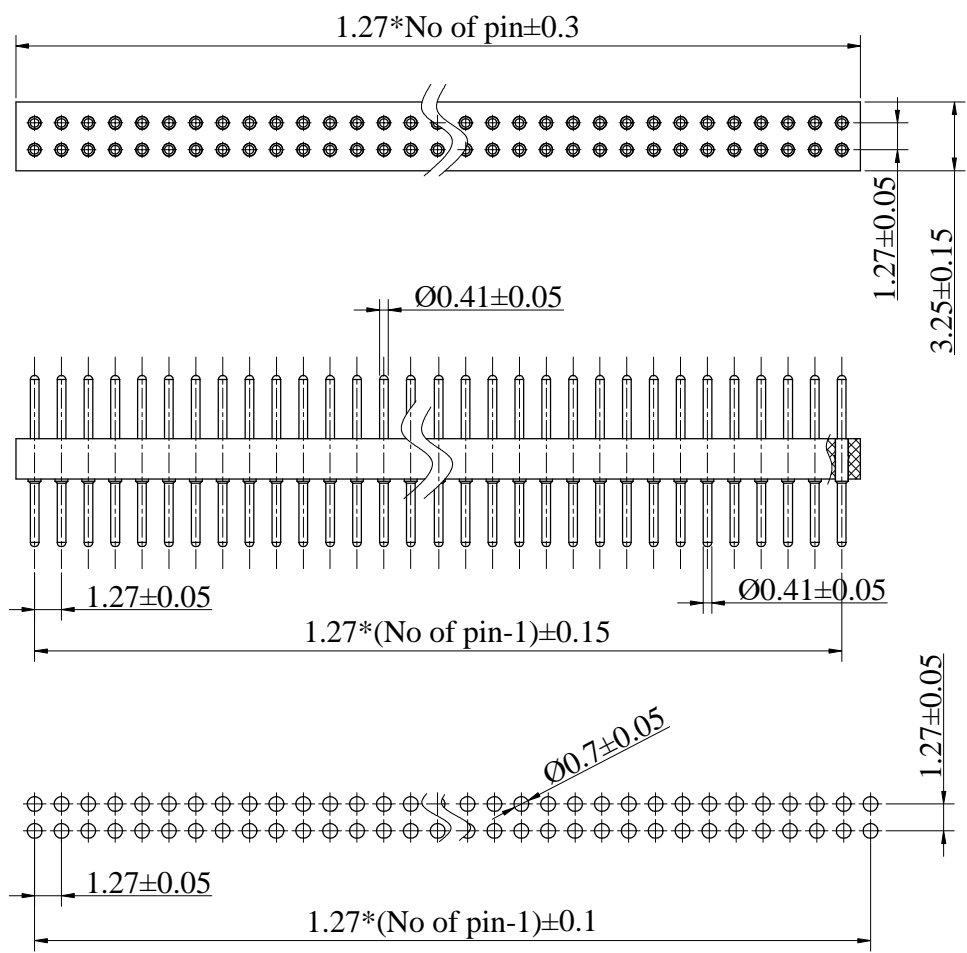
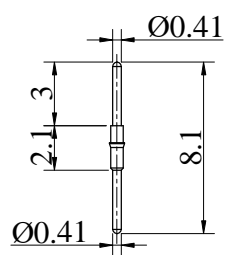
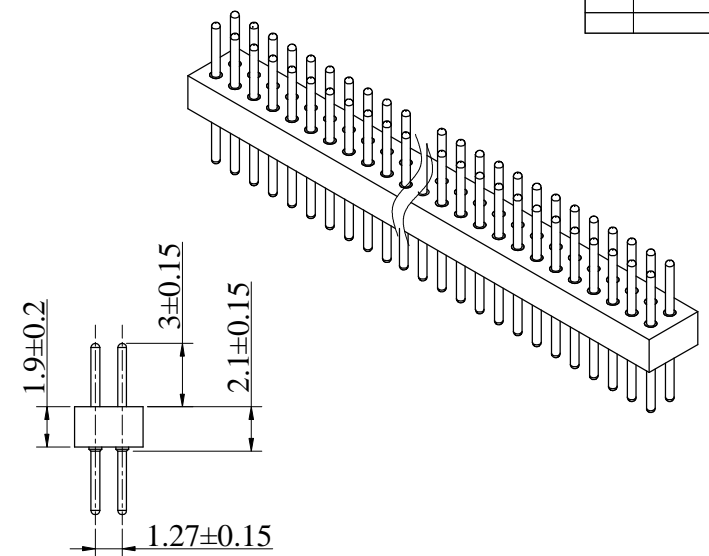


REV.	ECN NO.	APPD	DATE
A0	RELEASE	Jeff Zhou	11/07/12



P. C. Board Layout



Pin detail

**ELECTRICAL:**  
 Current rating: 3.0Amps/Contact MAX  
 Contact resistance: 10mΩ / Contact MAX  
 Insulation resistance: 1000MΩ at V=100V MIN  
 Operating voltage: 60V AC/DC

**MECHANICAL**  
 Operating temperatures:  
 Gold plated: -40°C to +105°C  
 Soldering Temperature: +240°C, 10S MAX

**Material**  
 PIN: Brass, machined  
 Plating(PIN): 50u" Ni, GOLD FLASH  
 Insulator body(Black): PPS or other(UL94V-0)

How to order

1 2 8 - X - X X X X - X X X X - X X X X

排数规格		Pin位		间距 (PITCH)		Pin规格		圆针电镀规格		塑胶高度		塑胶材质		唛头		流水号	
代码	说明	代码	说明	代码	说明	代码	说明	圆针电镀规格	8.1mm	代码	高度	代码	材质	代码	说明	代码	说明
1	单排	01-40	单排	0	1.27	0	直针	镀锡Sn: 200u"	4001	1	1.9mm	1	PPS	0	nexttron	1	无
2	双排	02-80	双排			1	弯针	Gold flash	4002	2	2.2mm	2	PBT				
						2	SMT	镀金Au: 10u"	4003			3	PA46				
								镀金Au: 15u"	4004								
								镀金Au: 20u"	4005								
								镀金Au: 30u"	4006								

X ± 0.5	UNITS mm	NAME: XX芯8.1mm-1.27pitch双排 180度圆针	深圳市君灏精密工业有限公司 SHENZHEN JUNHAO ENGINEERING CO.,LTD
.X ± 0.38			
.XX ± 0.25	MAT'L	PART NO.: 128-2-XX01-4002-110	TITLE: 1.27mmPitch SIP Adapters DIP Pin Length 8.1mm
.XXX ± 0.08			
X° ± 2°	FINISH	APPD:	DWG NO.: EP-C-128-2-0115
		CHKD:	SCALE: 1:1
		DR: Jeff Zhou	SHEET: 1/1
		11/07/12	REV: A0

THESE DRAWINGS AND SPECIFICATIONS ARE THE PROPERTY OF JUNHAO ENGINEERING CO.,LTD. AND SHALL NOT BE REPRODUCED COPIED OR USED IN ANY MANNER WITHOUT THE PRIOR WRITTEN CONSENT OF JUN HAQ ENGINEERING CO.,LTD