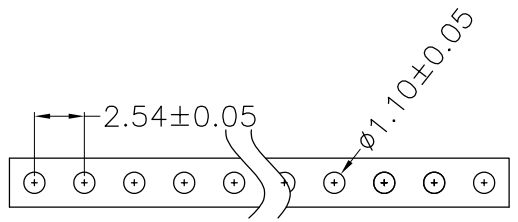
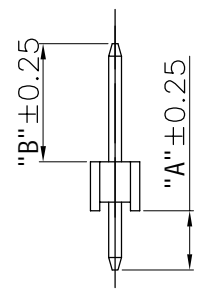
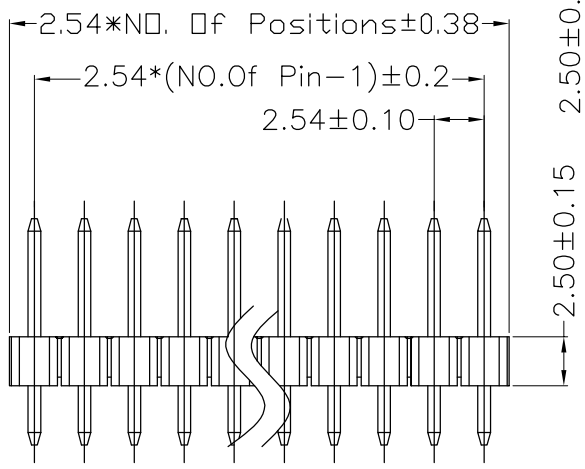
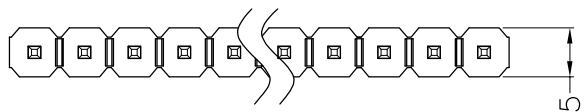
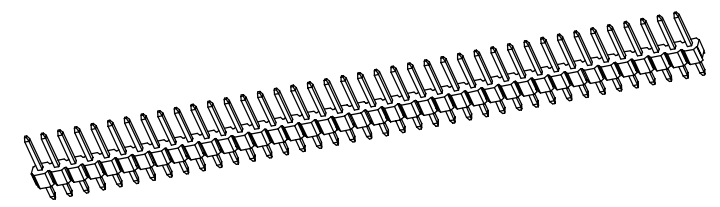


REV.	ECN NO.	APPD	DATE
AO	RELEASE	niezhenqi	08/19'13



**PCB LAYOUT**

**NOTES:**

1. MATERIALS:
  - 1-1. INSULATOR: Polyester UL94V-0.
  - 1-2. CONTACT: BRASS.
  - 1-3. PLATED: GOLD PLATED OVER Ni.
2. ELECTRICAL CHARACTERISTICS:
  - 2-1. CURRENT RATING: 3 Amp.
  - 2-2. VOLTAGE RATING: 250V AC/DC.
  - 2-3. CONTACT RESISTANCE: 30 mOhms MAX.
  - 2-4. INSULATION RESISTANCE: 1000 MOhms MIN.
  - 2-5. WITHSTANDING VOLTAGE: 500V AC/MINUTE.
  - 2-6. Operation Temperature: -25° C~+105° C.

**Part NO.**

211-\*\*-1\*-002\*-\*\*-\*\*

NO. Of Positions: 02~40  
 Contact length: Di m "A" "X" "B"  
 1: 3. 0x6. 0  
 3: 4. 5x6. 0  
 4: 5. 0x6. 0  
 6: 3. 2x5. 84  
 9: 3. 0x9. 5 D8: 5. 8x8. 2  
 C: 3. 0x4. 5 D6: 4. 0x6. 0  
 M 3. 0x5. 0 V: 5. 08x5. 84

唛头  
 0: 无  
 1: nextron  
 2: tyco  
 Housing Color  
 0: BLACK 9: WHITE  
 Housing Material  
 0: PBT 4: PA6T  
 Plated  
 See Table (1)

Table (1)

Code	Definition
1	Gold/Flash
2	Gold 3u"
3	Gold 5u"
4	Gold 10u"
5	Gold 15u"
6	Gold 30u"
7	Bright Tin
8	Matte Tin
T	Gold 2u"

X ±0.5	UNITS	NAME:	深圳市君灏精密工业有限公司 SHENZHEN JUNHAO ENGINEERING CO., LTD
.X ±0.38	mm	2.54mm PIN HEADER Straight Type	
.XX ±0.25	MAT'L	PART NO.:	TITLE: 2.54mm PIN HEADER Single row Straight Type
.XXX ±0.08	FINISH	211-**-1*-002*-**-**	
.X' ±2'		APPD: jeff	08/19'13
		CHKD: jeff	08/19'13
		DR: niezhenqi	08/19'13
DWG NO.:			EP-C-211-0010-0136
		SCALE	SHEET
		1:1	1/1
		REV.	AO

THESE DRAWINGS AND SPECIFICATIONS ARE THE PROPERTY OF JUNHAO ENGINEERING CO.,LTD. AND SHALL NOT BE REPRODUCED, COPIED OR USED IN ANY MANNER WITHOUT THE PRIOR WRITTEN CONSENT OF JUN HAQ ENGINEERING CO.,LTD