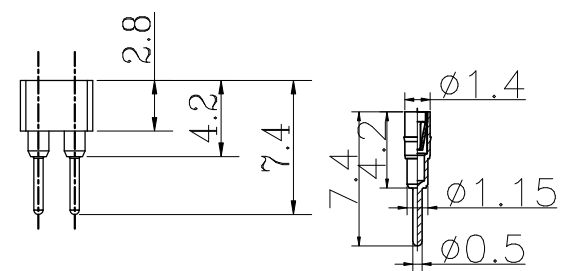
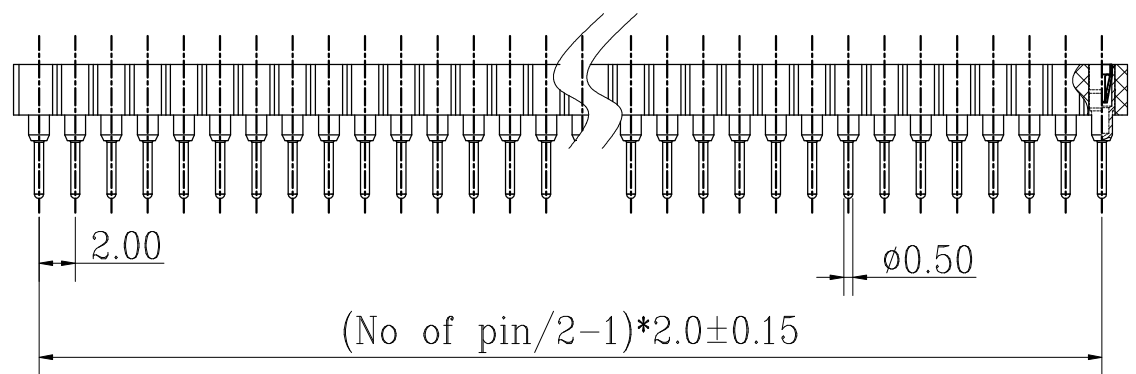
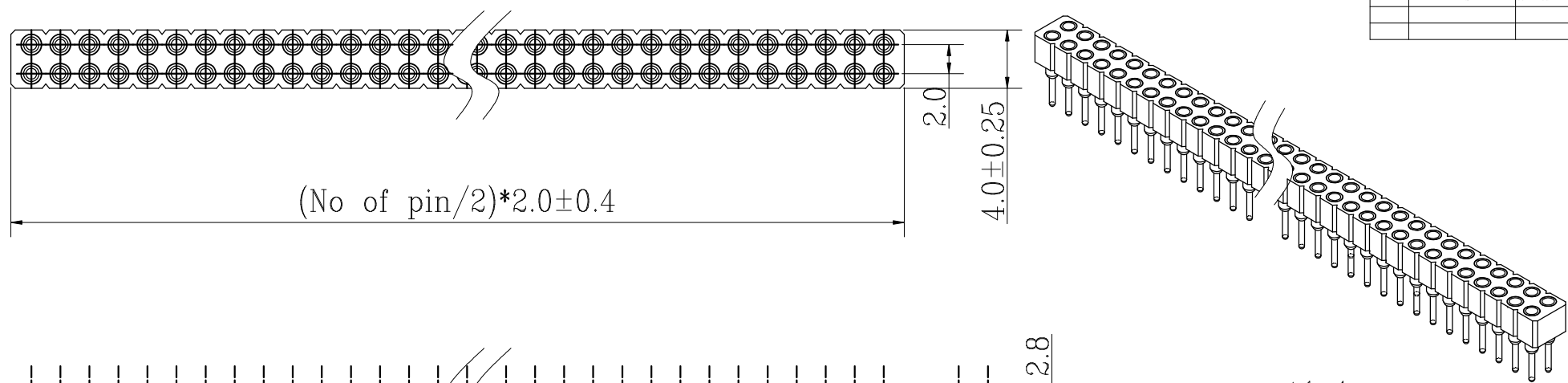


REV.	ECN NO.	APPD	DATE
A0	RELEASE	Jeff Zhou	06/23/09



Pin detail

ELECTRICAL:

Current rating:3.0Amps/Contact MAX
 Contact resistance:20mΩ / Contact MAX
 Insulation resistance:1000MΩ at V=100V MIN
 Operating voltage:60V AC/DC

Material

PIN: Brass,machined
 CLIP: Beryllium Copper
 Plating(PIN):50u" Ni,100u" Sn
 Plating(Clip:6 finger contact):
 50u" NI,GOLD FLASH
 Insulator body(Black):
 PPS or other(UL94V-0)

MECHANICAL

Average insertion force with steel
 pin of Ø0.46mm:250g MAX
 Average with drawal force with
 steel pin of Ø0.46mm:25G MIN
 Operating temperatures:-40°C ti +105°C
 Soldering Temperature:+245°C,10S MAX

How to order:

1 2 4 - X - XX 5 X - XXXX - XXX



X ±0.5	UNITS	NAME:
.X ±0.20	mm	XX芯2.0pitch双排圆孔插座
.XX ±0.10	MAT'L	PART NO.:
.XXX ±0.05	FINISH	124-2-XX57-XXXX-211
.X° ±2°		APPD:
THESE DRAWINGS AND SPECIFICATIONS ARE THE PROPERTY OF JUNHAO ENGINEERING CO.,LTD. AND SHALL NOT BE REPRODUCED COPIED OR USED IN ANY MANNER WITHOUT THE PRIOR WRITTEN CONSENT OF JUN HAQ ENGINEERING CO.,LTD.		CHKD:
		DR: Jeff Zhou
		06/23/09

JHM 深圳市君灏精密工业有限公司
 SHENZHEN JUNHAO ENGINEERING CO.,LTD

TITLE:
 XX芯2.0pitch单(双)排圆孔插座

DWG NO.:
 EP-C-124-2-XX57-0303

SCALE	SHEET	REV.
1:1	1/1	A0