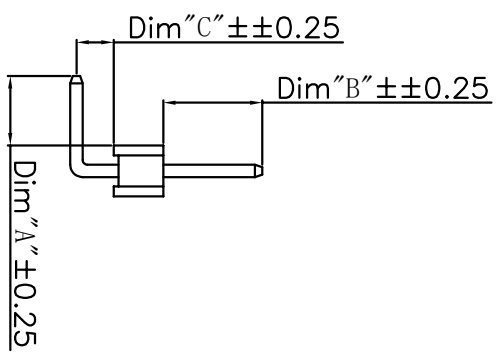


PCB LAYOUT



- NOTES:
1. MATERIALS:
- 1-1. INSULATOR: Polyester UL94V-0.
 - 1-2. CONTACT: BRASS SQ 0.5mm.
 - 1-3. PLATED: CONTACT GOLD PLATED OVER Ni.
2. ELECTRICAL CHARACTERISTICS:
- 2-1. CURRENT RATING: 1.0 Amp.
 - 2-2. VOLTAGE RATING: 250V AC/DC.
 - 2-3. CONTACT RESISTANCE: 20 mOhms MAX.
 - 2-4. INSULATION RESISTANCE: 1000 Mohms MIN.
 - 2-5. WITHSTANDING VOLTAGE: 500V AC/MINUTE.
 - 2-6. Operation Temperature: -40° C~+105° C.

Part NO. 208-**-2*-*02*-***

NO. Of Positions 02~40

Contact Length Dim "A" "X" "B" 1: 2.8x4.0

R/A Hight Dim C 1: 0.25
2: 1.0
3: 1.5

Plated

Housing Color 0: BLACK 9: WHITE

Housing Material 4: PA6T

唛头 0: 无
1: nexttron

Code	Definition
1	Gold Flash
2	Gold 1.0~2u"

See Table (1)

X ±0.5		UNITS		NAME:	
X ±0.30		mm		20 Pin Header Single Row R/A_Type	
.XX±0.20		MAT'L		PART NO.:	
.XXX±0.10		FINISH		208-**-2*-*02*-***	
X' ±Z'		APPD:		jeff	
		CHKD:		jeff	
		DR:		niezhengqi	
				09/17'25	
				09/17'25	
				09/17'25	
深圳市君灏精密工业有限公司 SHENZHEN JUNHAO ENGINEERING CO., LTD TITLE: 2.0 Pin Header Single Row DWG NO.: EP-C-208-0020-0132 SCALE 1:1 SHEET 1/1 REV. A2					

THESE DIMENSIONS AND SPECIFICATIONS ARE THE PROPERTY OF JUNHAO ENGINEERING CO., LTD. NO PART OF THIS DOCUMENT IS TO BE REPRODUCED OR USED IN ANY MANNER WITHOUT PERMISSION FROM JUNHAO ENGINEERING CO., LTD.

REV.	ECON NO.	APPD	DATE
A0	RELEASE	Cheng	09/28'08
A1	视图更新	niezhengqi	09/08'13
A2	电路板更新	niezhengqi	09/17'25